



POWER-BREAK[®]

FIELD INSTALLABLE ACCESSORIES

GEH-3394
Rev. C

PADLOCKING ACCESSORY FOR 2000 - 4000A FRAMES

DESCRIPTION

The Padlock enables the breaker to be locked in an open position with up to three padlocks.

To install the padlock, remove the escutcheon plate and replace it with the padlock device.

PADLOCKING THE BREAKER

Press the OFF button, slide the padlock slide plate (Fig. 2) to the left, and lock the breaker as shown in Fig 3.

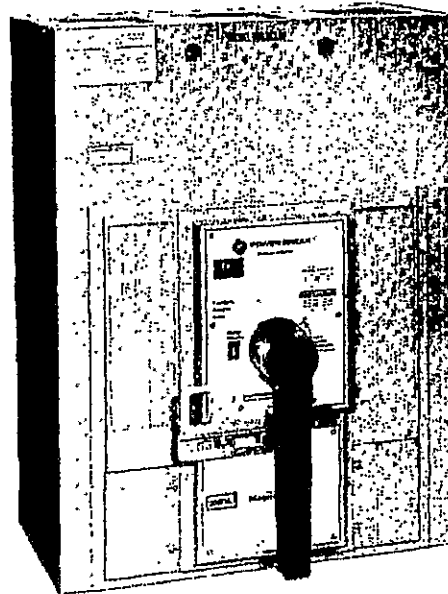


Fig. 2 Device Shown with Breaker Open



Fig. 1 Device Shown Mounted



Fig. 3 Device Shown with Breaker Locked Open

Instructions

DOOR INTERLOCK AND PADLOCK COMBINATION FOR 2000 - 4000A FRAMES

DESCRIPTION

The combination Door Interlock and Padlocking device enables the breaker to be locked in an open position with up to three (3) padlocks. It can also be used to interlock the panel door while the breaker is closed. A defeating means is provided as part of the door interlock to permit in-service inspection by qualified personnel.

INSTALLATION

The combination Door Interlock and Padlocking mechanism is constructed as part of the breaker escutcheon plate. The plate is assembled to the breaker cover using its four mounting screws.

A separate steel stud is provided for customer mounting. This stud mounts on the enclosure door and is intended to remove any slack between the door panel and the interlock. To mount, drill a 0.187 inch hole in the door panel as shown below. The stud may be riveted to the door if the panel is 0.125 inches max.

PADLOCKING THE BREAKER

Press OFF button and slide padlock slide plate to the left. Lock slide plate in place using 3 padlocks if necessary. Fig. 8.

TO USE DOOR INTERLOCK

Verify that the mechanism latch fully extends beyond padlock to interlock the panel door. When required, press defeat mechanism as shown in Fig. 9 and slide latch to the right to clear the panel door.

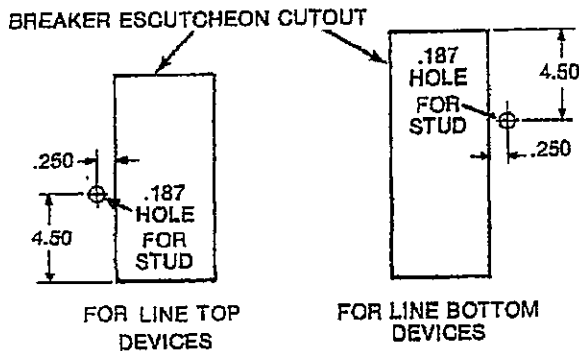


Fig. 4 Door Drilling for Magnetrip Breakers

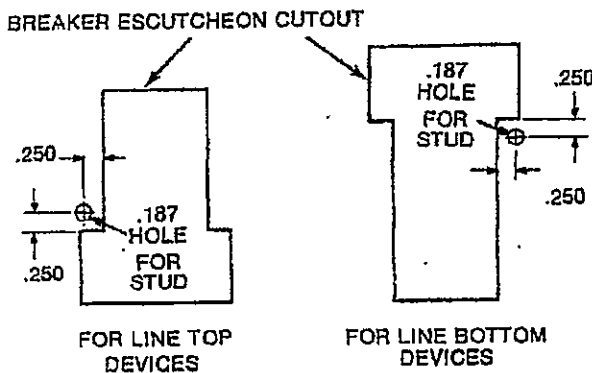


Fig. 5 Door Drilling for Versatrip and Selectrip Breakers

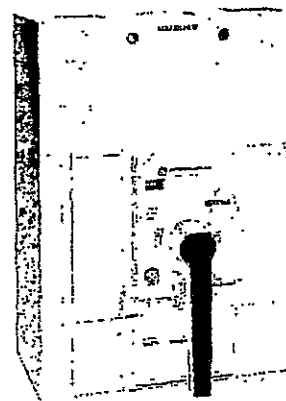


Fig. 6
Device Shown Mounted

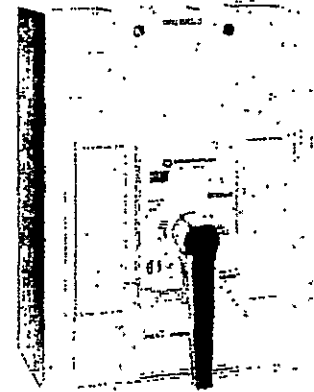


Fig. 7
Device Shown with
Breaker Open

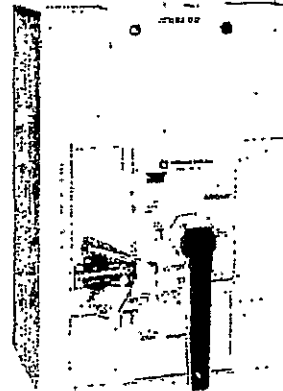


Fig. 8
Device Shown with
Breaker Locked Open

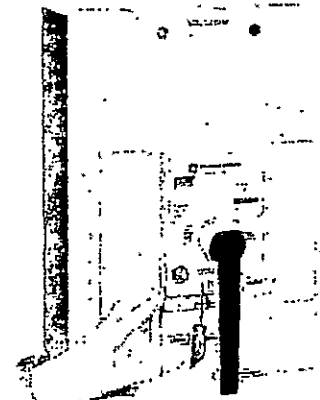


Fig. 9
Device Shown with
Interlock being defeated