



INSTALLATION • OPERATION • MAINTENANCE

# INSTRUCTIONS

## TYPE CV VOLTAGE RELAY

### CAUTION

Before putting relays into service, remove all blocking which may have been inserted for the purpose of securing the parts during shipment, make sure that all moving parts operate freely, inspect the contacts to see that they are clean and close properly, and operate the relay to check the settings and electrical connections.

### APPLICATION

The Type CV Relays are single-phase induction-disc type relays operating either on under or over-voltage or both. These relays are applied as a voltage fault detector operating in conjunction with other protective relays. The relays are also used as timing devices for various automatic operations.

### CONTENTS

This instruction leaflet applies to the following types of relays:

CV-1 Long Time Undervoltage Relay  
 CV-2 Short Time Undervoltage Relay  
 CV-4 Long Time Overvoltage Relay  
 CV-5 Short Time Overvoltage Relay  
 CV-6 Long Time Over or Undervoltage Relay  
 CV-7 Short Time Over or Undervoltage Relay  
 CV-8 Low Voltage Pickup Overvoltage Relay

### CONSTRUCTION AND OPERATION

The Types CV-1, CV-2, CV-4, CV-5, CV-6, and CV-7 Relays consist of a voltage unit and an indicating contactor switch (ICS). The principal component parts of the relay and their location are shown in Figs. 1, 2, and 3.

The Type CV-8 Relay in addition to the above components also has a capacitor which is series tuned with the main coil of the electromagnet. This tuned circuit offers a low impedance to fundamental current and a high impedance to third harmonic currents. Hence, the relay has a low pickup value for fundamental voltage and a much higher value of pickup for third harmonic voltage. At rated voltage the electromagnet is saturated causing the circuit to be detuned. The impedance of the circuit is increased and limits the fundamental current to a safe value.

#### A. Voltage Unit (CV)

The overvoltage unit operates on the induction-disc principle. A main tapped coil located on the center leg of an "E" type laminated structure produces a flux which divides and returns through the outer legs. A shading coil causes the flux through the left leg (front view) to lag the main pole flux. The out-of-phase fluxes thus produced in the air gap causes a contact closing torque.

The undervoltage unit operates on the same principle as the overvoltage unit except the shading coil is on the right leg (front view). This causes the out-of-phase fluxes to produce a contact opening torque.

#### B. Indicating Contactor Switch (ICS)

The indicating contactor switch is a small d-c operated clapper type device. A magnetic armature, to which leaf-spring mounted contacts are attached, is attracted to the magnetic core upon energization of the switch. When the switch closes, the moving contacts bridge two stationary contacts, completing the trip circuit. Also, during

*All possible contingencies which may arise during installation, operation, or maintenance, and all details and variations of this equipment do not purport to be covered by these instructions. If further information is desired by purchaser regarding his particular installation, operation or maintenance of his equipment, the local Westinghouse Electric Corporation representative should be contacted.*

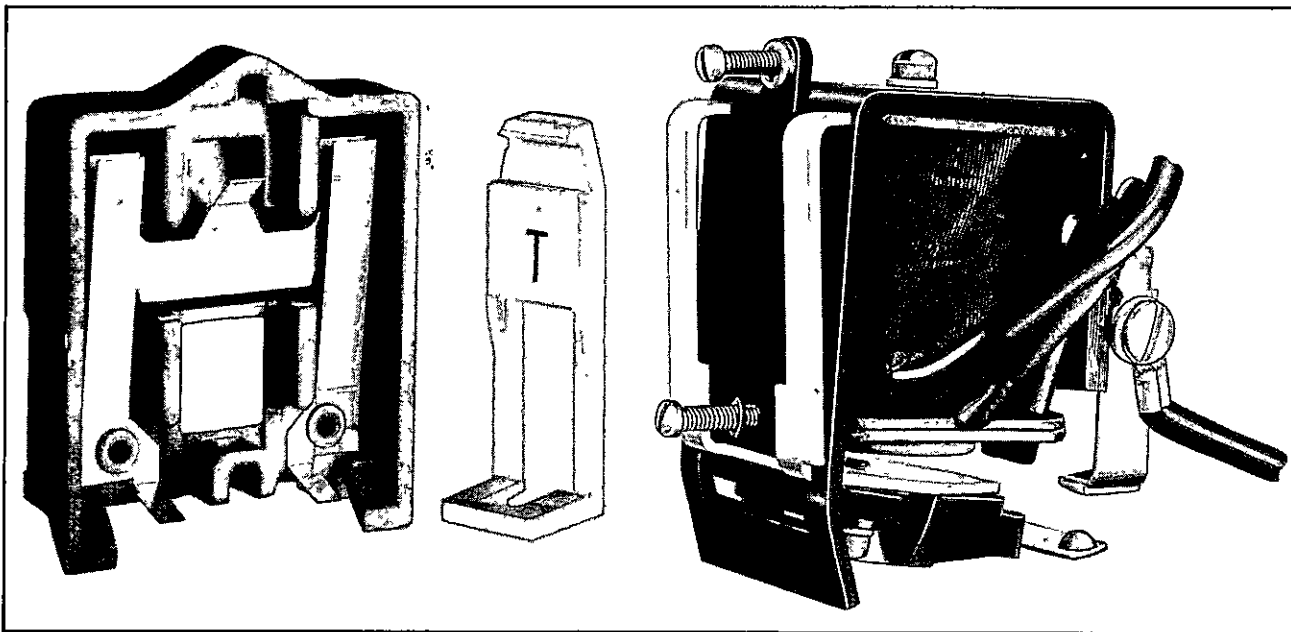


Fig. 3. Indicating Contactor Switch (ICS).

this operation two fingers on the armature deflect a spring located on the front of the switch, which allows the operation indicator target to drop. The target is reset from the outside of the case by a push rod located at the bottom of the case.

The front spring, in addition to holding the target, provides restraint for the armature and thus controls the pickup value of the switch.

### CHARACTERISTICS

The low pickup CV-8 Overvoltage Relay is available with the following continuous voltages.

Type Relay	2 Minute Rating
67 volts	140 volts
199 volts	300 volts

The minimum voltage required to just close the CV-8 contacts is typically 8% of the continuous voltage. Typical operating times of the type CV-8 relay are shown on Fig. 10. An adjustable 5.4 to 20 volt relay with a 67 volt continuous and a 16 to 40 volt relay with a continuous of 199 volts is also available. However, the operate times for the adjustable CV-8 relay will differ from Fig. 10 and will depend on the pickup setting.

The CV-1 and CV-2 Undervoltage Relays, CV-4 and CV-5 Overvoltage Relays, and CV-6 and CV-7

Over or Undervoltage Relays are available in the following voltage ranges:

Range	Taps							
55-140	55	64	70	82	93	105	120	140
110-280	110	128	140	164	186	210	240	280

#### A. CV-1 and CV-2 Undervoltage Relays — CV-4 and CV-5 Overvoltage Relays

Tap value voltage is the minimum voltage required to just close the relay contacts. At this value of voltage, the moving contacts will leave the backstop of the time dial and move to close the front contacts. Normal operation of the two relays is such that the CV-1 and CV-2 undervoltage relays will open its contacts with application of voltages greater than tap value voltage, while the CV-4 and CV-5 overvoltage relay closes its contacts with voltages greater than tap value voltage. Thus, the operating curves of Figs. 11 and 12 of the undervoltage relays apply when the voltage is originally higher than tap value voltage and is suddenly reduced to a value shown on the curves. The operating curves of Figs. 13 and 14 of the overvoltage relays apply when the voltage is initially below tap value voltage and is suddenly raised to a value shown on the curves.

#### B. CV-6 and CV-7 Over or Undervoltage Relays

Tap value voltage is the value of voltage at which the stationary front contact closes. The

various terminal plate holes, the relay will just close its contacts at the corresponding voltage of 55-64-70-82-93-105-120-140 volts or as marked on the terminal plate.

The nylon screw on the terminal plate holds the tap plate in position when taps are being changed. To use the position on the terminal plate in which the nylon screw is used, remove the nylon screw and place it in one of the unused holes. Then remove the tap screw and insert it in the terminal plate hole.

The CV-8 relay has no taps. Its minimum pickup of approximately 8% of continuous voltage is set by adjusting the restraint spring. For this setting, the adjustable resistor, where used, should be shorted out.

Where the resistor is used, the pickup setting can be adjusted from approximately 8% to 30% of the continuous voltage rating. This setting is made by adjusting the resistor. Note, however, that the CV-8 time curves shown in Fig. 10 apply only when the resistor is shorted out. Timing tests should be conducted after the resistor is used to change the pickup. This will insure proper coordination time for the desired pickup setting.

### Instantaneous Reclosing

The factory adjustment of the voltage unit contacts provides a contact follow. Where circuit breaker reclosing will be initiated immediately after a trip by the overvoltage contact, the time of the opening of the contacts should be a minimum. This condition is obtained by loosening the stationary contact mounting screw, removing the contact plate and then replacing the plate with the bent end resting against the contact spring.

For double trip relays, the upper stationary contact is adjusted such that the contact rests solidly against the backstop. The lower stationary contact is then adjusted such that both stationary contacts make contact simultaneously with their respective moving contact.

### B. Indicating Contactor Switch (ICS)

No setting is required on the ICS unit except the selection of the 0.2 to 2.0 ampere tap setting. This selection is made by connecting the lead located in front of the tap block to the desired setting by means of the connecting screw.

## ENERGY REQUIREMENTS

The 60 Hz burdens of the CV-1, CV-2, CV-4, CV-5, CV-6, CV-7 relays at rated voltage are as follows: (For 50 Hz, multiply voltamperes by 1.18, multiply watts by 1.38.)

Δ Rated Voltage	Taps		Volt-Amps.	Power Factor	Watts
	120 Volt Relay	240 Volt Relay			
120 or 240 Volts	55	110	10.0	.38	3.8
	64	128	7.0	.35	2.5
	70	140	5.8	.34	2.0
	82	164	4.0	.33	1.3
	93	186	3.1	.31	1.0
	105	210	2.4	.29	.7
	120	240	1.8	.28	.5
	140	280	1.3	.26	.3

The 50 Hz and 60 Hz burdens of the CV-8 relays at continuous voltage do not exceed the following:

Δ Continuous Voltage	Volt Amps.	Power Factor	Watts
199	30	.342	10
67	30	.342	10

### CV-8 With Adjustable Pickup

Range	Setting	Applied Voltage	VA
5.4 to 20V	5.4	67	30
	20	67	15
16 to 40V	16	199	30
	40	199	20

The short time (15 seconds) rating is 240V and 510V respectively for the 67 and 199V relay.

ΔThese relays will continuously stand either 110% of rated voltage or tap value voltage, whichever is higher.

## INSTALLATION

The relays should be mounted on switchboard panels or their equivalent in a location free from dirt, moisture, excessive vibration, and heat. Mount the relay vertically by means of the four mounting holes on the flange for semi-flush mounting or by means of the rear mounting stud or studs for projection mounting. Either a mounting stud or the mounting screws may be utilized for grounding the relay. The electrical connections may be made directly to the terminals by means of screws for steel panel mounting or to

the terminal studs furnished with the relay for thick panel mounting. The terminal studs may be easily removed or inserted by locking two nuts on the stud and then turning the proper nut with a wrench.

For detailed FT Case information refer to I.L. 41-076.

## ADJUSTMENTS AND MAINTENANCE

The proper adjustments for correct operation of this relay have been made at the factory. Upon receipt of the relay, no customer adjustments, other than those covered under "Settings", should be required.

## PERFORMANCE CHECK

The following check is recommended to verify that the relay is in proper working order:

### A. CV Unit

#### 1. Contact

- a) By turning the time dial, move the moving contacts until they deflect the stationary contact to a position where the stationary contact is resting against its backstop. The index mark located on the movement frame should coincide with the "O" mark on the time dial. For double trip relays, the follow on the stationary contacts should be approximately  $1/64''$ .
- b) For relays identified with a "T", located at lower left of stationary contact block, the index mark on the movement frame will coincide with the "O" mark on the time dial when the stationary contact has moved through approximately one half of its normal deflection. Therefore, with the stationary contact resting against the backstop, the index mark is offset to the right of the "O" mark by approximately  $.020''$ . (For the type CV-6 and CV-7 relays the back contact has no follow when the front contact is through one-half of its follow). The placement of the various time dial positions in line with the index mark will give operating times as shown on the respective time-current curves. For double trip relays, the follow on the stationary contacts should be approximately  $1/32''$ .

#### 2. Minimum Trip Voltage

Set the time dial to position 6. Alternately apply tap value voltage plus 3% and tap value voltage minus 3%.

##### a. CV-4 and CV-5 Overvoltage Relays, CV-6 and CV-7 Over or Undervoltage Relays

The moving contact should leave the backstop for the tap value voltage plus 3% condition and should return to the backstop for the tap value voltage minus 3% condition.

##### b. CV-1 and CV-2 Undervoltage Relays

The moving contact should leave the backstop for the tap value voltage minus 3% condition and should return to the backstop for the tap value voltage plus 3% condition.

##### c. CV-8 Overvoltage Relays

The moving contact should leave the backstop between 8.3% and 7.7% of continuous voltage. Note that the resistor, where used, should be shorted when making these measurements.

Where the resistor is used, the pickup setting can be adjusted from approximately 8% to 30% of the continuous voltage rating. This setting is made by adjusting the resistor. Note, however, that the CV-8 time curves shown in Fig. 10 apply only when the resistor is shorted out. Timing tests should be conducted after the resistor is used to change the pickup. This will verify proper coordination time for the desired pickup setting.

#### 3. Time Curve

Table 1 shows the time curve calibration points for the various types of relays. With the time dial set to the indicated position, apply the voltages specified in Table 1 (e.g. for the CV-4, 140 percent of tap value voltage) and measure the operating time of the relay. The operating time should equal those of Table 1 plus or minus 5%. Note that the resistor, where used in CV-8, should be shorted when making this measurement.

### B. Indicating Contactor Switch (ICS)

Close the main relay contacts and pass sufficient d-c current through the trip circuit to close

these measurements and the short removed when completed.

Where the resistor is used, the pickup setting can be adjusted from approximately 8% to 30% of the continuous voltage rating. This setting is made by adjusting the resistor. Note, however, that the CV-8 time curves shown in Fig. 10 apply only when the resistor is shorted out. Timing tests should be conducted after the resistor is used to change the pickup. This will verify proper coordination time for the desired pickup setting.

### 3. Time Curve Calibration

Install the permanent magnet.

#### a. CV-1 and CV-2 Undervoltage Relay

Use test circuit of Fig. 18. With switch "S" opened, adjust resistor "A" until voltmeter reads tap value voltage or higher. Close switch "S" and adjust resistor "B" until the voltmeter reads 50 percent of tap value voltage. Open switch "S" and allow the moving contact to move to the back-stop of the time dial. Close switch "S" and measure operating time.

Adjust the permanent magnet gap until the operating time corresponds to the value given in Table 1.

#### b. CV-4 and CV-5 Overvoltage Relay, CV-8 Low Pickup Overvoltage Relay

Apply the indicated voltage of Table 1 and measure the operating time. Adjust the permanent magnet keeper until the operating time corresponds to the value given in Table 1.

#### c. CV-6 and CV-7 Over or Undervoltage Relay

Apply the indicated voltage of Table 1 and measure the operating time. Adjust the permanent magnet keeper until the operating time corresponds to the value given in Table 1.

Measure the reset time of the disc from the stationary front contact to the stationary back contact. This time should be as shown in Table 1.

Table 1

Type Relay	Percent Tap Value Voltage or Pickup Voltage	Time Dial Setting	Operating Time in Sec.	Reset Time in Sec.
CV1	50	6	68	---
CV2	50	6	8.6	---
CV4	140	6	37.5	---
CV5	140	6	6.8	---
CV6	140	6	33	32.5
CV7	140	6	5.9	5.7
CV8	800	6	3.0	---

#### B. Indicating Contactor Switch — Unit (ICS)

Close the main relay contacts and pass sufficient d-c current through the trip circuit to close the contacts of the ICS. This value of current should not be greater than the particular ICS setting being used. The indicator target should drop freely.

#### RENEWAL PARTS

Repair work can be done most satisfactorily at the factory. However, interchangeable parts can be furnished to the customers who are equipped for doing repair work. When ordering parts, always give the complete nameplate data.

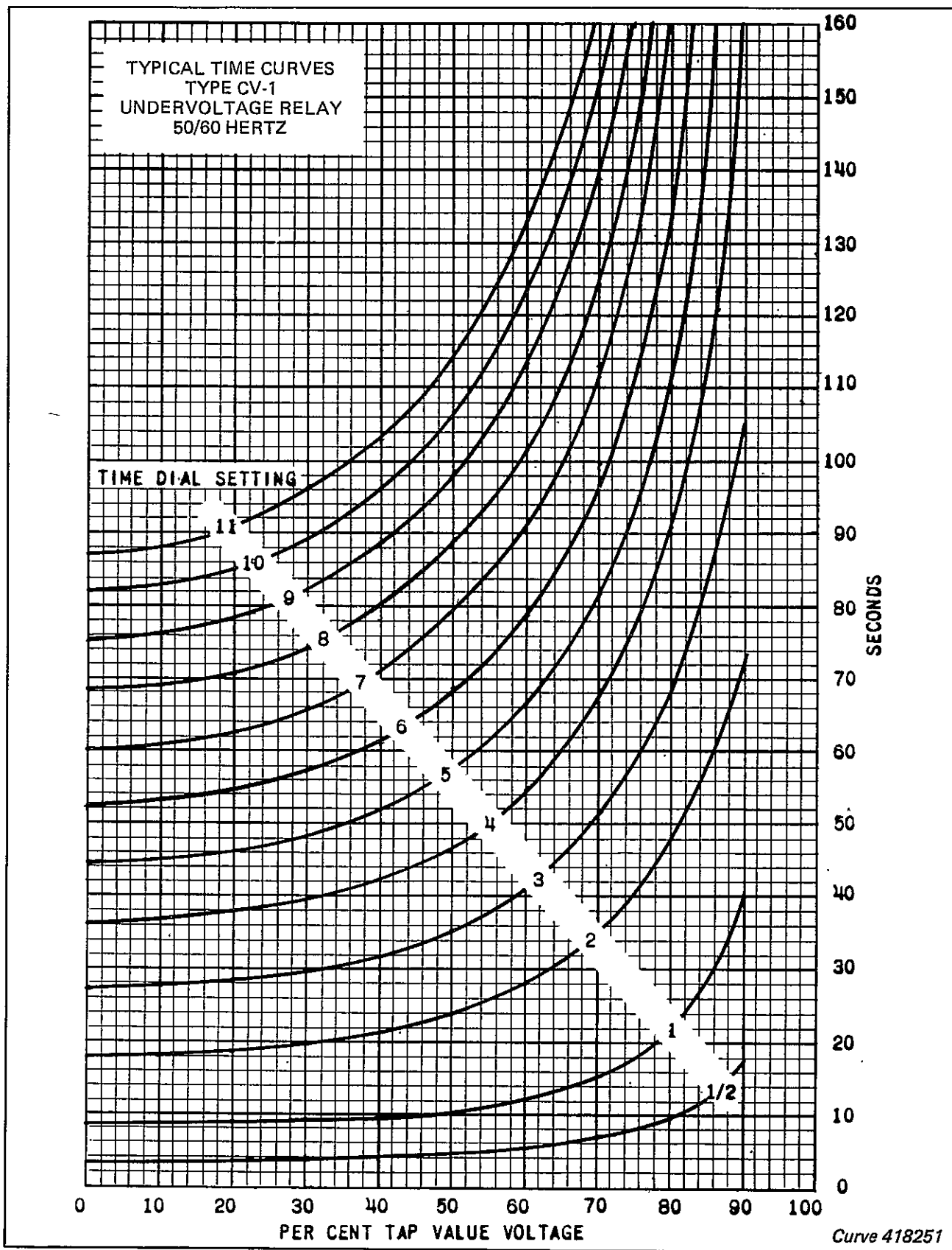


Fig. 11. Typical Time Curves of the Type CV-1 Long Time Undervoltage Relay.

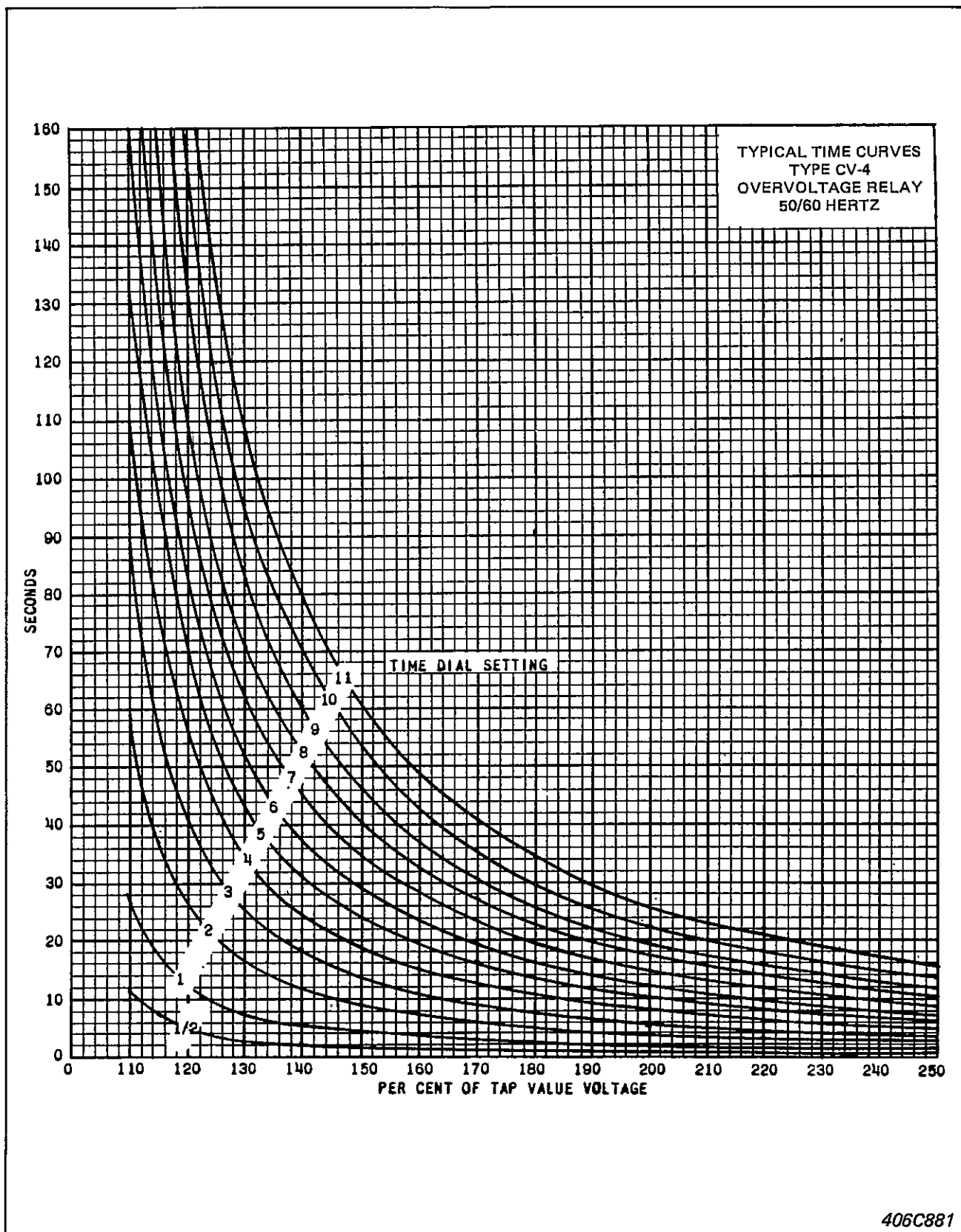
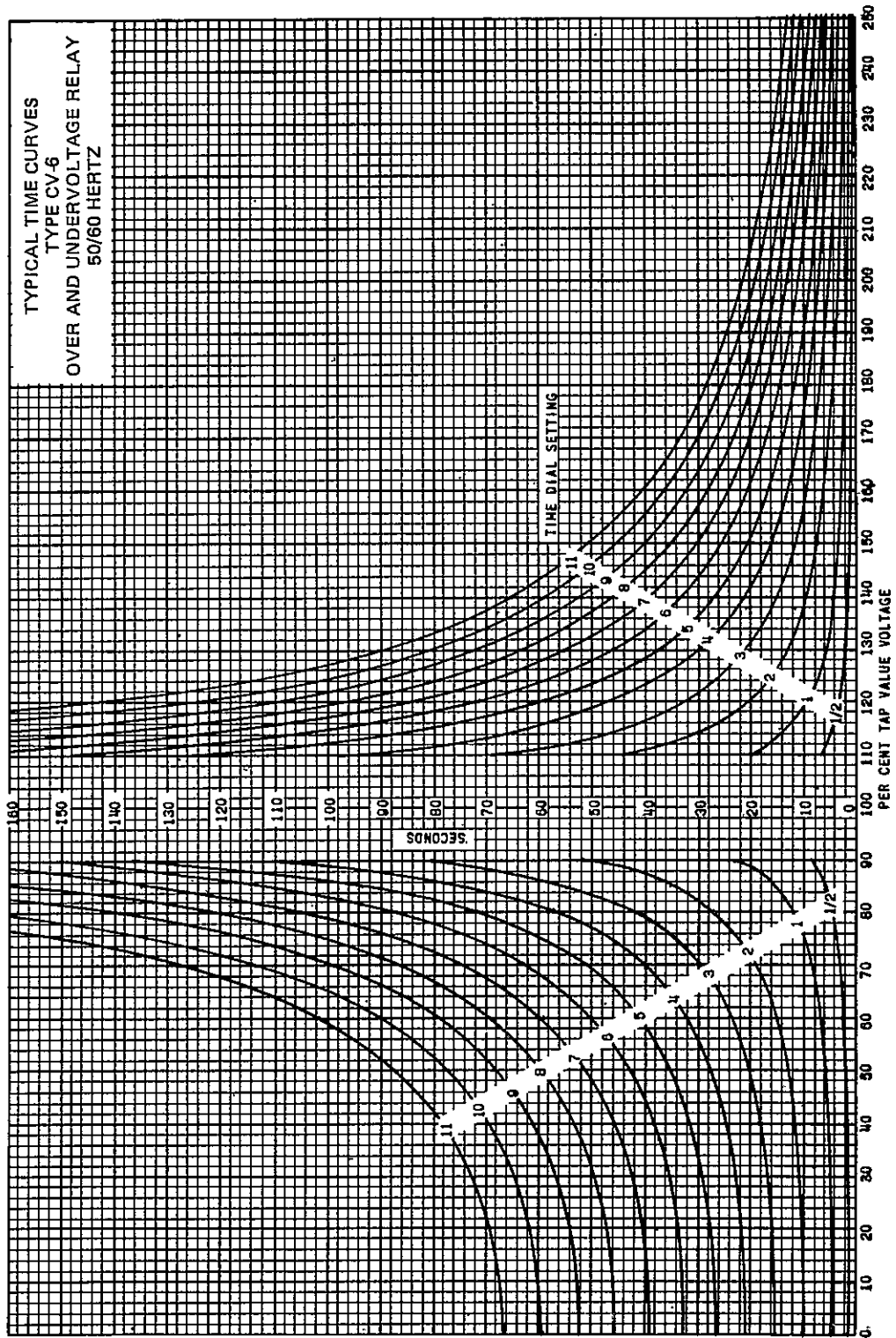


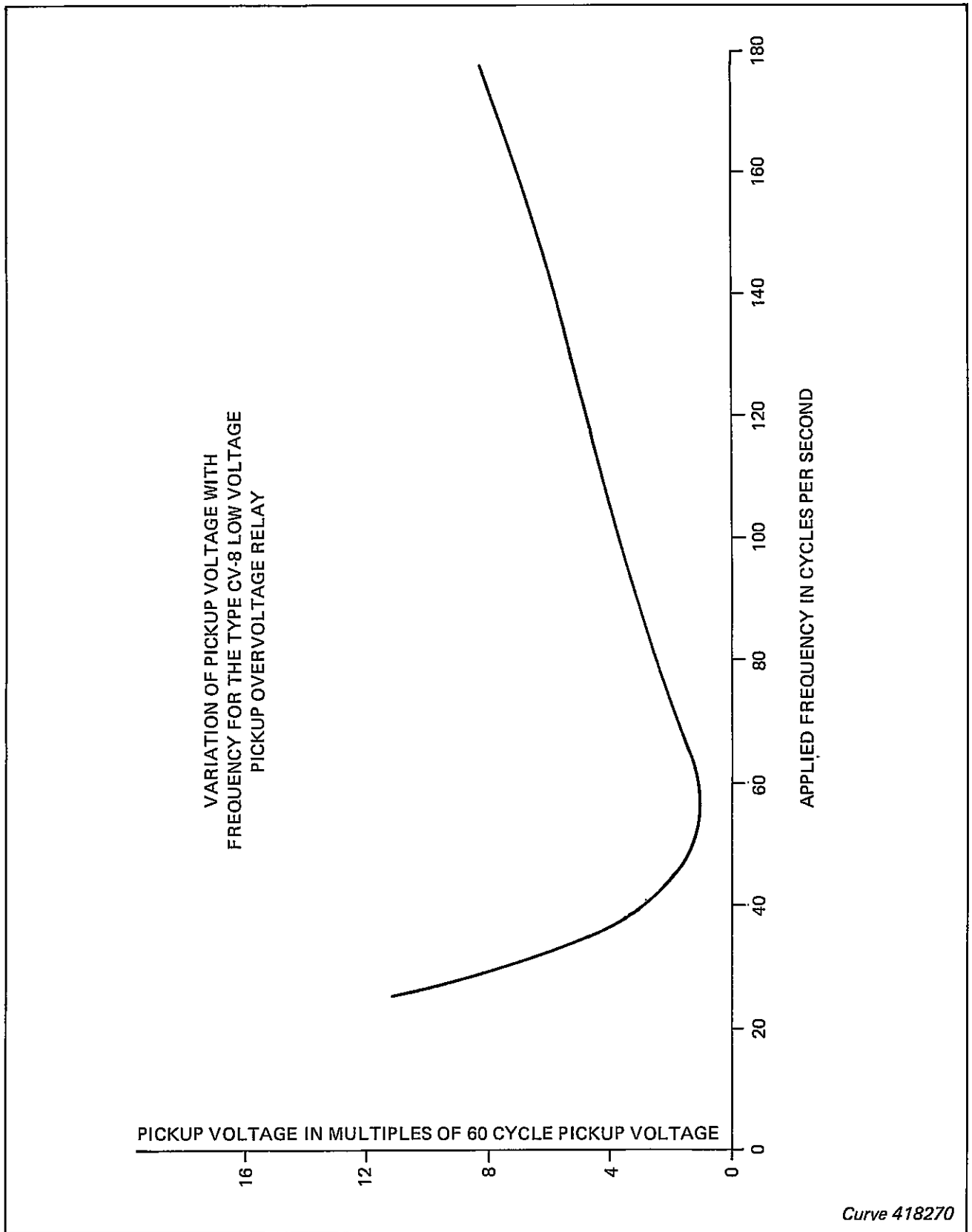
Fig. 13. Typical Time Curves of the Type CV-4 Long Time Overvoltage Relay.



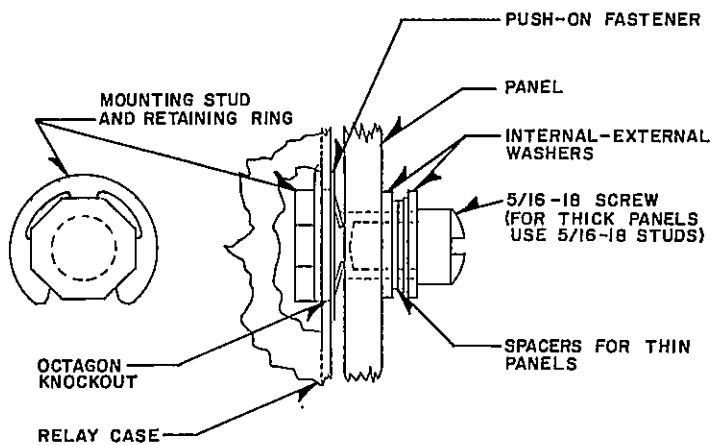
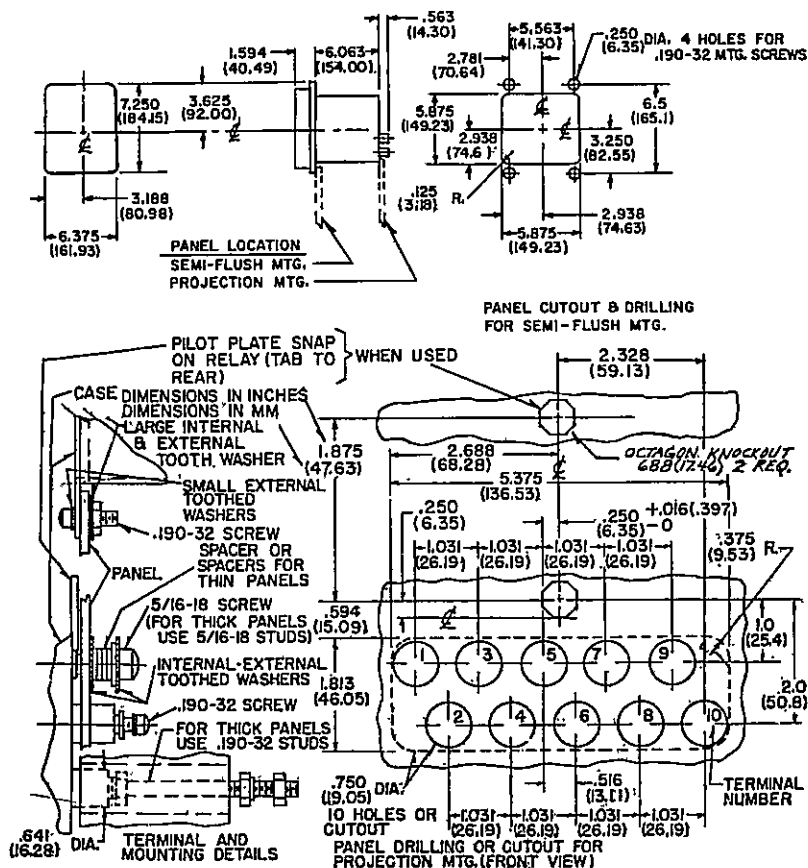
406C882

Fig. 15. Typical Time Curves of the Type CV-6 Long Time Over and Undervoltage Relay.





★ Fig. 17 Typical Sensitivity vs. Frequency Curve for Type CV-8 Low Pickup Overvoltage Relay.



**MOUNTING STUD DETAIL**

NO SCALE

Sub 14  
57D7900

Fig. 20. Outline and Drilling for FT11 Case used for Projection and/or Semi-Flush Case.