

# Lugs and Adaptors

## 600-1600A Frame POWER-BREAK® Circuit Breakers

## 800-1600A HPC Switches

**WARNING:**

When installing these accessories, the breaker must be completely de-energized and disconnected from the electrical circuit.

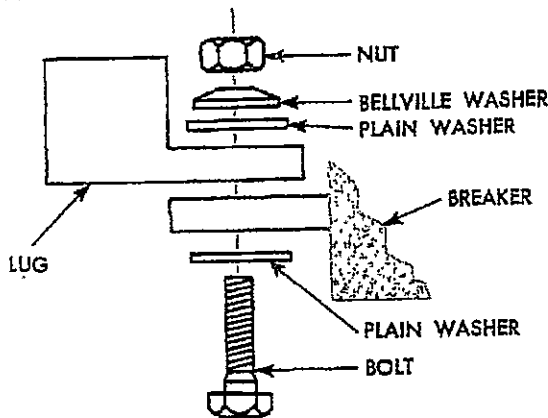
**INSTALLATION INSTRUCTIONS**

Before installing any of these accessories, remove all foreign matter from line and load strap surfaces and corresponding surfaces of accessory. Be sure mating surfaces are free of burrs.

For the following accessories, recommended tightening torques in inch pounds are:

- 3/8" -16 Hex Bolts — 200 Min., 250 Max.
- 1/2" -13 Hex Bolts — 275 Min., 350 Max.
- 5/16" Allen Type Lug Screws — 275 Min., 300 Max.
- 3/8" Allen Type Lug Screws — 300 Min., 325 Max.

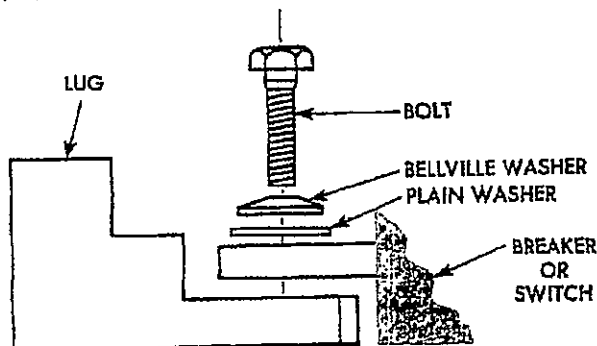
**FIGURE 1**  
**TYPICAL ASSEMBLY OF LUG**



**LUG CAT. NO.**

- TPLUG106 (1) 2-600 MCM CU/AL
- (2) 1/0-250 MCM CU/AL
- TPLUG108 (1) 3/0-800 MCM CU/AL
- (1) 250-800 MCM AL
- TPLUG206 (2) 4-600 MCM CU/AL

**FIGURE 2**  
**TYPICAL ASSEMBLY OF LUG**



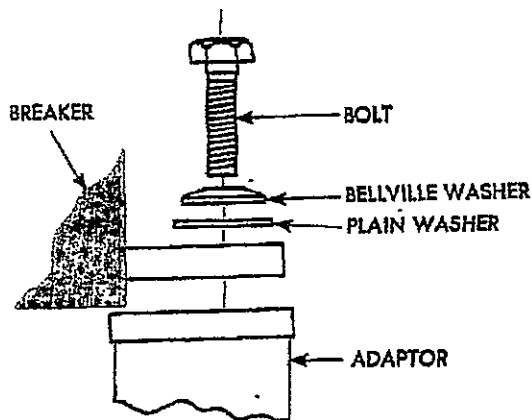
**LUG CAT. NO.**

- TPLUG308 (3) 3/0-750 MCM CU/AL
- THPLUG308 (3) 3/0-750 MCM CU/AL
- \*TPLUG408 (4) 500-800 MCM CU/AL
- \*THPLUG408 (4) 500-800 MCM CU/AL

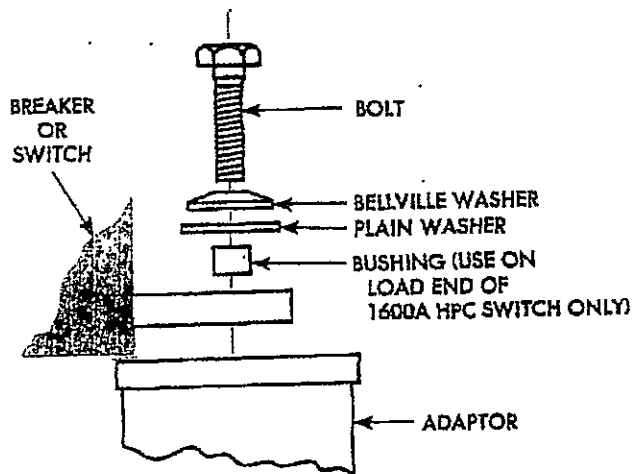
\*Note - For 1600A.  
Copper Cables MUST be used.

**TYPICAL ASSEMBLY—**  
**BUS CONNECTION ADAPTORS**

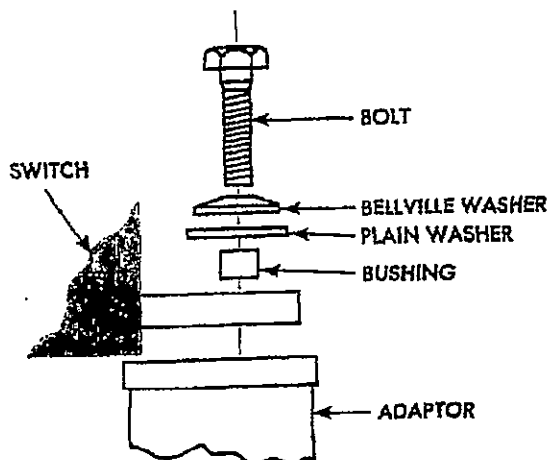
**FIGURE 3—TP08FCA**



**FIGURE 4—TP16FCA**



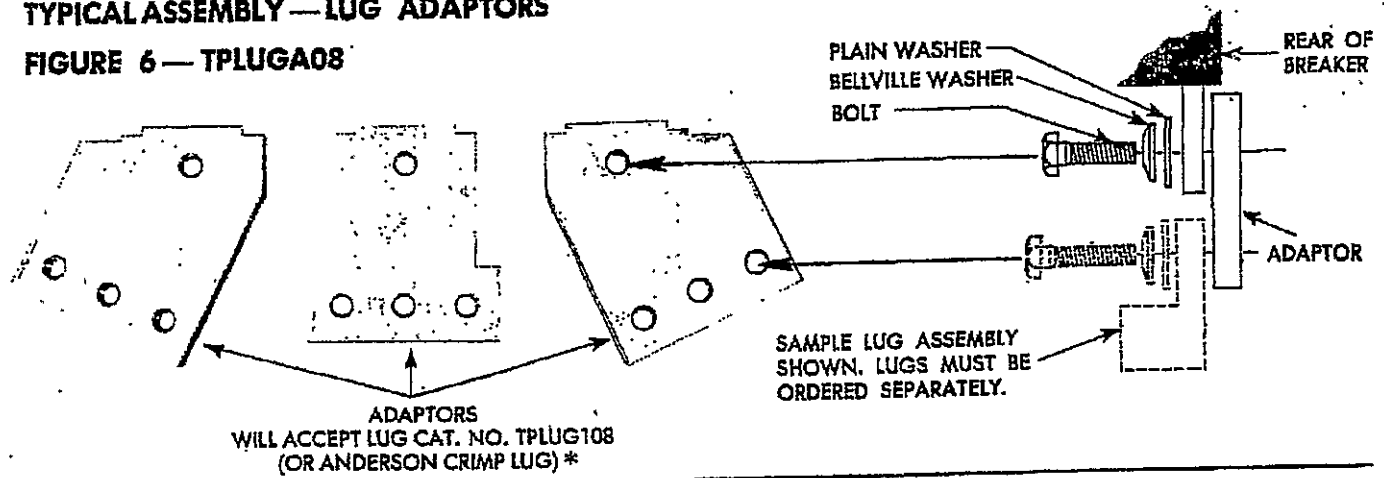
**FIGURE 5—THPC08FCA**



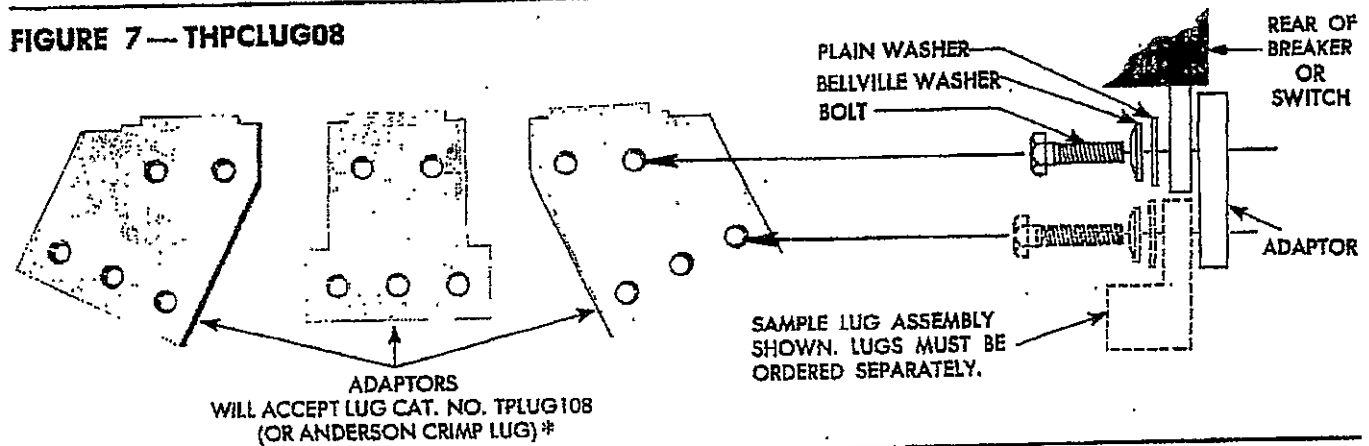
(Continued on Reverse Side)

## TYPICAL ASSEMBLY — LUG ADAPTORS

### FIGURE 6 — TPLUGA08



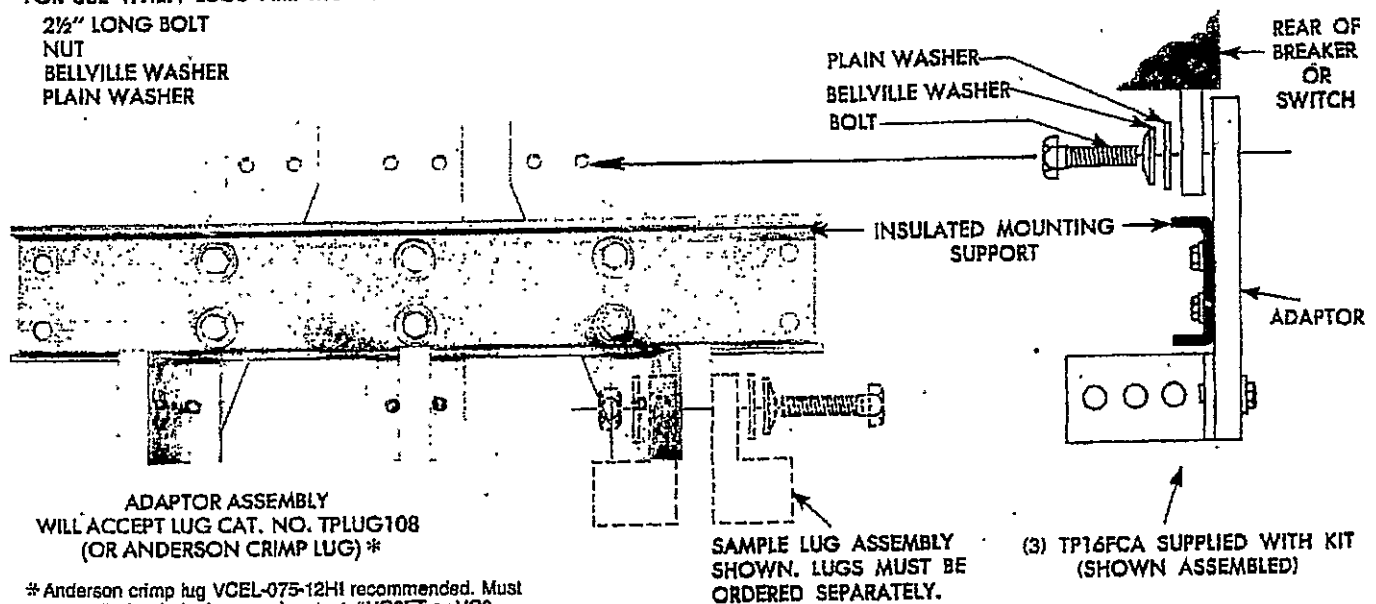
### FIGURE 7 — THPCLUG08



### FIGURE 8 — TPLUGA16

**SPECIAL LUG HARDWARE SUPPLIED**  
FOR USE WHEN LUGS ARE MOUNTED BACK TO BACK

- 2 1/2" LONG BOLT
- NUT
- BELLVILLE WASHER
- PLAIN WASHER



\* Anderson crimp lug VCEL-075-12H1 recommended. Must be applied with Anderson crimp tool #VC8FT or VC8.

*These instructions do not purport to cover all details or variations in equipment nor to provide for every possible contingency to be met in connection with installation, operation or maintenance. Should further information be desired or should particular problems arise which are not covered sufficiently for the purchaser's purposes, the matter should be referred to the General Electric Company.*