

**Weisler & Associates, Inc., Texas**  
9219 Katy Freeway  
Houston, Texas 77024  
713 467-1847

# **ASEA**

**Contactors**  
**AC and DC operated**

**Underwriters Laboratories**  
**Recognized and Listed**

## Separate Coils

Voltage	Hz	Catalog numbers for separate coils					
<b>AC</b>		<b>EG 30</b>	<b>EG 40-1</b>	<b>EG 80</b>	<b>EG 160</b>	<b>EG 315</b>	<b>EG 630-1</b>
110-120	60	SK 415 9601	SK 415 9601	SK 415 9411	SK 418 9401	SK 418 9411	SK 418 9421
208	60	SK 415 9602	SK 415 9602	SK 415 9412	SK 418 9402	SK 418 9412	SK 418 9422
220-240	60	SK 415 9603	SK 415 9603	SK 415 9413	SK 418 9403	SK 418 9413	SK 418 9423
440-480	60	SK 415 9604	SK 415 9604	SK 415 9414	SK 418 9404	SK 418 9414	SK 418 9424
550-600	60	SK 415 9605	SK 415 9605	SK 415 9415	SK 418 9405	SK 418 9415	SK 418 9425
<b>DC</b>		<b>EG 30 L</b>	<b>EG 40-1 L</b>	<b>EG 80 L</b>	<b>EG 160 L</b>	<b>EG 315 L</b>	<b>EG 630-1 L</b>
24	-	SK 415 9131	SK 415 9131	SK 415 9231	SK 418 9131	SK 418 9231	SK 418 9331
48	-	SK 415 9132	SK 415 9132	SK 415 9232	SK 418 9132	SK 418 9232	SK 418 9332
110	-	SK 415 9134	SK 415 9134	SK 415 9234	SK 418 9134	SK 418 9234	SK 418 9334
220	-	SK 415 9135	SK 415 9135	SK 415 9235	SK 418 9135	SK 418 9235	SK 418 9335
440	-	SK 415 9136	SK 415 9136	SK 415 9236	SK 418 9136	SK 418 9236	SK 418 9336

## Contact Kits

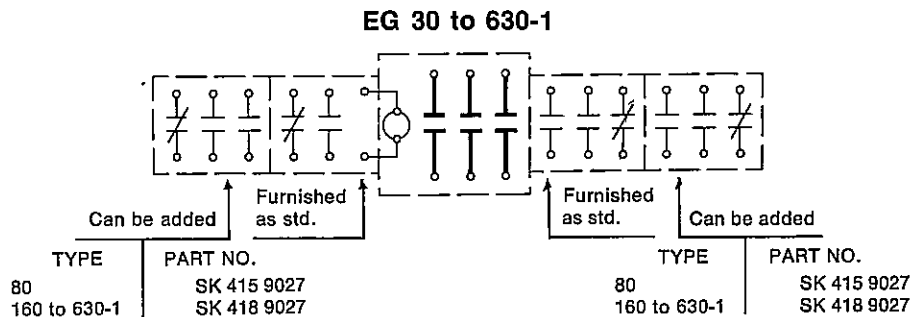
A kit consists of all movable and stationary contacts, springs, screws, etc. to replace a complete set of main contacts.

For Contactors EG and EG L	30	40-1	80	160	315	630-1
Catalog Number	EG 30 CK	EG 40 CK	EG 80 CK	EG 160 CK	EG 315 CK	EG 630 CK

## Technical Data

For Contactors EG and EG L		30	40-1	80	160	315	630-1
<b>Power consumption of operating coils</b>							
AC 60 Hz	Inrush VA	230	230	400	900	1600	3300
	Sealed VA	30	30	45	55	100	175
	Sealed W	9	9	13	15	30	50
DC	Inrush W	50	50	45	70	95	400
	Sealed W	15	15	16	18	30	70
<b>Average operating time for main contacts</b>							
AC-coil	Make ms	25	25	25	25	25	25
	Break ms	15	15	15	15	15	15
DC-coil	Make ms	35	35	75	100	125	80
	Break ms	15	15	20	25	25	45

## Wiring Diagrams



NOTE: • All wiring to Auxilliary Contacts must be same polarity.  
 • Only 1 Add-On Block can be added to each contactor on Type ERG V, — Reversing.  
 • N.O. and N.C. Interlock Contacts are non-overlapping.  
 • No additional contacts can be added to EG 30 & 40-1.



## PRICE LIST

### TYPE EG CONTACTORS AND ACCESSORIES

#### AC OPERATED CONTACTORS

#### Underwriters Laboratory Listed

<u>Type</u>	<u>Size</u>	<u>List Price</u>
EG 30	1	66.00
EG 40-1	2	94.00
EG 80	3	154.00
EG 160-UL	4	380.00
EG 315-UL	5	760.00
EG 630-1-UL	6	1720.00

The above units bear the UL mark and include all line and load cable connectors.

#### Underwriters Laboratory Recognized

<u>Type</u>	<u>Size</u>	<u>List Price</u>
EG 160	4	330.00
EG 315	5	680.00
EG 630	6	1580.00

The above units do not bear the UL mark. They do not include line and load cable connectors. Suitable connectors may be ordered from catalog.

#### CONNECTOR KITS

<u>Cat. No.</u>	<u>List Price</u>
EGC 160	10.50
EGCA 315	12.00
EGCB 315	13.50
EGCA 630	24.00
EGCB 630	27.00

Prices valid for standard voltage ratings shown in catalog. For different voltage ratings consult nearest sales office.

Discount Schedule SP-1





-2-

### AC OPERATED CONTACTORS

#### Mechanically Interlocked

<u>Type</u>	<u>Size</u>	<u>List Price</u>
ERG 30-V	1	184.00
ERG 40-1V	2	220.00
ERG 80-V	3	390.00
ERG 160-V	4	820.00
ERG 315-V	5	1630.00
ERG 630-1V	6	3440.00

### DC OPERATED CONTACTORS

<u>Type</u>	<u>Size</u>	<u>List Price</u>
EG 30L	1	114.00
EG 40L	2	142.00
EG 80L	3	242.00
EG 160L	4	382.00
EG 315L	5	772.00
EG 630L	6	1738.00

### SMALL TYPE CONTACTORS

#### AC OPERATED

#### DC OPERATED

<u>Type</u>	<u>List Price</u>	<u>Type</u>	<u>List Price</u>
EG 10	30.00	EG 10L	64.00
EG 20	42.00	EG 20L	94.00
ERG 20-V	94.00	ERG 20LV	198.00

Prices valid for standard voltage ratings shown in catalog. For different voltage ratings consult nearest sales office.

Discount Schedule SP-1





### Mechanical Interlocking Base

<u>Cat. No.</u>	<u>List Price</u>
EG 30MB	28.00
EG 40MB	28.00
EG 80MB	36.00
EG 160MB	46.00
EG 315MB	60.00
EG 630MB	76.00

### Bus Bar Kits

<u>Cat. No.</u>	<u>List Price</u>
EG 160UBK	66.00
EG 160LBK	64.00
EG 315UBK	74.00
EG 315LBK	72.00
EG 630UBK	140.00
EG 630LBK	136.00

### Contact Kits

<u>Cat. No.</u>	<u>List Price</u>
EG 30CK	40.00
EG 40CK	40.00
EG 80CK	70.00
EG 160CK	84.00
EG 315CK	196.00
EG 630CK	392.00

### Add-on Interlocks

<u>Cat. No.</u>	<u>List Price</u>
SK 415 9025	16.00
SK 415 9027	16.00
SK 418 9025	16.00
SK 418 9027	16.00

### MAGNET COILS

<u>Type</u>	<u>List Price</u>	<u>Type</u>	<u>List Price</u>
EG 30	20.00	EG 30L	36.00
EG 40-1	20.00	EG 40L	36.00
EG 80	28.00	EG 80L	56.00
EG 160	36.00	EG 160L	80.00
EG 315	60.00	EG 315L	116.00
EG 630-1	114.00	EG 630L1	126.00

Above prices valid for standard voltage ratings shown in catalog. For different voltage ratings consult nearest sales office.

Discount Schedule SP-1







-4-

Starter Kits For Use With  
ASEA Contactors and Westinghouse Overloads

Kits consist of back plates, overload relay,  
mounting screws and connecting links.

<u>Size</u>	<u>Kit No.</u>	<u>List</u>
1	EG SK-1	24.50
2	EG SK-2	33.50
3	EG SK-3	45.50
4	EG SK-4	66.50

Kits must be ordered with the same size and  
quantity of contactors at the same time.

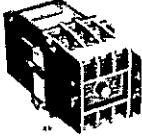
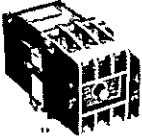
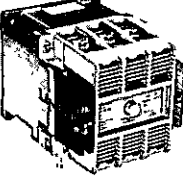
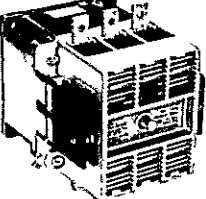
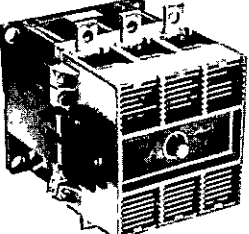
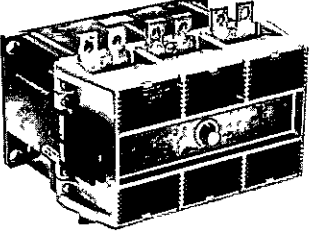
Discount Schedule SP-1A

---



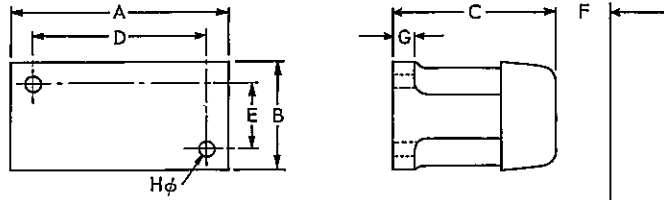
## Ordering Information

- Type EG – AC operated contactors
- Type EG L – DC operated contactors
- Type ERG V – Two contactors, AC operated, mechanically interlocked
- Type ERG LV – Two contactors, DC operated, mechanically interlocked

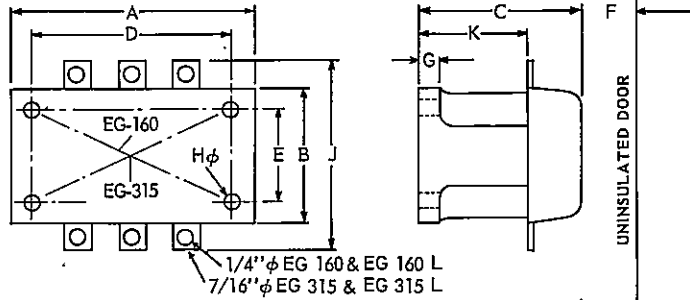
TYPE EG and EG L	NEMA Size	Maximum horsepower 3 phase 60 Hz		Rated thermal current (amps)	Mechanical life in millions of operations	Making current at 600 V (amps)	Break current at 600 (amps)
		240 V	480 V				
30 	1	7½	10	27	10	500	400
40-1 	2	15	25	45	10	500	400
80 	3	30	50	90	10	1000	1000
160 	4	50	100	135	10	2000	2000
315 	5	100	200	270	10	3000	3000
630-1 	6	200	400	540	5	6500	5150

# Dimensions of open type EG, EG L, ERG V, and ERG VL Contactors

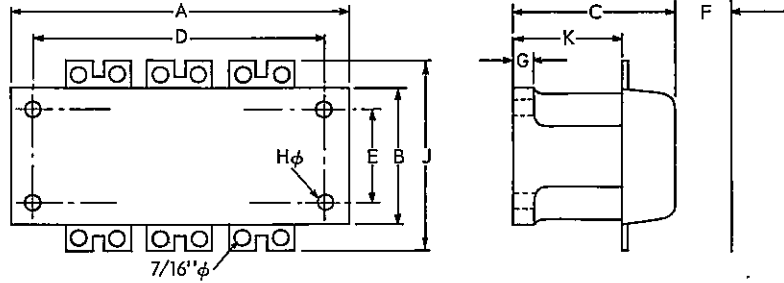
**EG and EG L**  
30  
40-1  
80



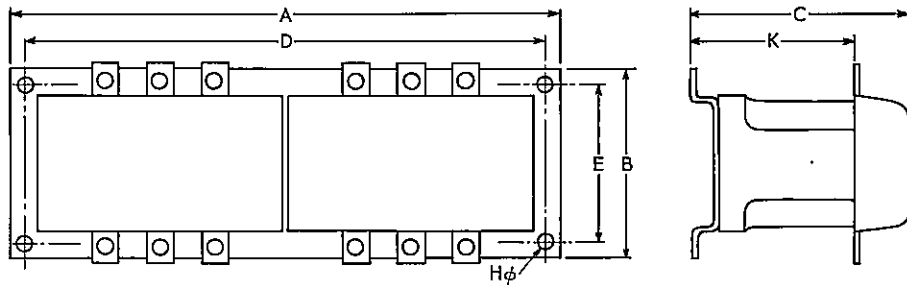
**EG and EG L**  
160  
315.



**EG and EG L**  
630-1



**ERG V & ERG LV**  
Mechanically  
Interlocked  
Contactors



**EG and EG L**

Dimensions in inches

SIZE	A	B	C	D	E	F min.	G	H	J	K	WT. lbs.
30/40-1	2•15/16	2•15/16	4•3/4	2•11/32	2•11/32	13/16	9/32	7/32	—	—	2•1/4
80	3•15/16	3•15/16	5•1/4	3•5/32	3•5/32	1	11/32	7/32	—	—	4•1/2
160	5	4•3/4	6•1/4	3•15/16	3•15/16	1	13/32	9/32	6•1/2	3•19/32	9•1/4
315	6•1/4	6	7•9/16	5•1/2	5•3/32	1•1/4	7/16	9/32	7•7/8	4•5/32	16
630-1	10•1/4	5•3/4	8	9•7/16	4•23/32	1•3/8	1/2	9/32	7•7/8	4•5/8	33

**ERG V and ERG LV**

30/40-1	5•7/8	4•7/32	5•1/2	5•5/16	3•3/4	—	—	7/32	—	3•15/32	5•1/2
80	7•27/32	5•3/16	6•1/8	7•9/32	4•23/32	—	—	7/32	—	3•25/32	10
160	9•13/16	6•1/16	7•7/16	9•1/4	5•1/2	—	—	9/32	—	4•11/16	20
315	12•9/16	7•5/8	8•7/8	11•27/32	6•7/8	—	—	3/8	—	5•15/32	36
630-1	20•7/16	7•13/32	9•9/16	19•11/16	6•11/16	—	—	3/8	—	6•3/16	74

Line connectors	AC-Operated		DC-Operated		Catalog Number
	Auxiliary Contacts NO	NC	Auxiliary Contacts NO	NC	
incl.	3	2	EG 30 SK 415 071•		EG 30 L SK 415 171•
			ERG 30 V SK 415 075•		ERG 30 LV SK 415 129•
incl.	3	2	EG 40-1 SK 415 037•		EG 40L-1 SK 415 137•
			ERG 40-1V SK 415 054•		ERG 40L-1V SK 415 183•
incl.	3	2	EG 80 SK 415 035•		EG 80 L SK 415 175•
			can be added	can be added	ERG 80 LV SK 415 185•
See Pg 5	3	2	EG 160 SK 418 034•		EG 160 L SK 418 174•
			can be added	can be added	ERG 160 LV SK 418 184•
See Pg 5	3	2	EG 315 SK 418 035•		EG 315 L SK 418 175•
			can be added	can be added	ERG 315 LV SK 418 185•
See Pg 5	3	2	EG 630-1 SK 418 036•		EG 630L-1 SK 418 176•
			can be added	can be added	ERG 630-1V SK 418 056•

Instead of the fullstop (•) in the Catalog Number, this Suffix should be added according to the selection table corresponding to the operating coil with the desired voltage and frequency.

### AC-operated contactor

Voltage	Hz	Suffix
110-120	60	1
208	60	2
220-240	60	3
440-480	60	4
550-600	60	5
optional	40-60	0

### DC-operated contactor

Voltage	Suffix
24	2
48	3
110	5
220	6
440	7
optional	0

#### \*\*\* Note

All units as shown are Underwriters Recognized and do not include display of UL mark. For listed units that include UL mark on nameplate and furnished with cable connectors, include suffix "UL" to catalog number.

i.e.: EG 160 is a recognized unit.  
EG 160-UL is a listed unit.

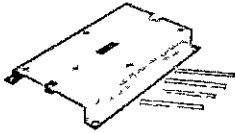
# Accessories



## Extra Auxiliary Contacts

The extra auxiliary contacts increase the width of the contactor by .396" (10mm) for EG 80 and by .473 (12mm) for EG160-630. Two extra auxiliary contacts may be added to a contactor (one per side). For the ERG V type, one extra auxiliary contact may be added per contactor.

For contactors EG and EG L	Diagram	Catalog number
80		SK 415 9027
160-630		SK 418 9027



## Mechanical Interlocking Kits

Each kit consists of base, levers and plastic pins for mounting two contactors of the same size to obtain a mechanical interlocking function.

For contactors EG and EG L	30/40-1	80	160	315	630-1
Catalog number	EG 40 MB	EG 80 MB	EG 160 MB	EG 315 MB	EG 630 MB

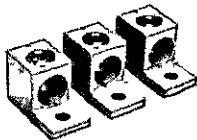


## Busbar Kits

Two bus connecting kits are available. The upper kit provides for parallelling line connections between two contactors. The lower kit provides for cross wiring lines 1 and 3 between two contactors.

All necessary bolts, nuts and washers are included in each kit. For full reversing function, order both upper and lower kits.

For contactors EG and EG L	160	315	630-1
Catalog number			
Upper Busbar Kit	EG 160 UBK	EG 315 UBK	EG 630 UBK
Lower Busbar Kit	EG 160 LBK	EG 315 LBK	EG 630 LBK



## Connector Kits

Al/Cu connectors to receive incoming and/or outgoing wires. Required for larger sizes only and furnished with necessary mounting screws and nuts. Three connectors included in kits for EG 160 and EG 315 and six connectors per kit for EG 630-1.

For contactors EG and EG L	160	315	630-1
For wire size	#8-3/0	#6-350MCM	#2-500MCM
Catalog number	EGC 160	EGCA 315	EGCB 315
			EGCA 630
			EGCB 630